

## ECIT4 LED Series

### Wide Body Vaportite Unit

This fully weatherproof LED unit is designed for use in areas of wet location. Designed to withstand direct contact with rain this unit is corrosion resistant and waterproof. This unit is ideal in areas such as car washes, store fronts, parking garages, kitchens, and chemical plants. Vapor Tite unit is capable of being hosed down for easy cleaning

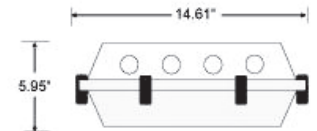
**Construction:** Exterior housing is designed for single piece injection molded fiberglass/plastic combination blend. Neoprene gasket and stainless steel pressure locks ensure waterproof seal. Interior gear tray is heavy gauge die formed steel which hinges to allow electrical raceway access while remaining attached to luminaire housing during installation and maintenance.

**ELECTRICAL:** All units are furnished with UL Listed Class P thermally protected ballast. Other voltages are available upon request. Fixtures meet requirements for UL Luminaire Standard # 1598. All units comply with National Energy Standard. All units are UL certified damp and wet location

**Mounting:** Vapor Tite Unit available with an stainless steel external hanging bracket. VT Series is watertight and must be drilled and sealed for each surface mounting or chain hanging application.

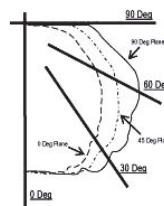
**WARRANTY & LISTINGS:**

- 5-year warranty of all electronics and housing.
- UL Certified for damp and wet location



Fixture Length			
T8	T5	T5HO	Length
F32T8	F28T5	F54T5HO	50"

Max weight = 20Lbs / 48"



RF	20									
	80%				70%			50%		
RC	70	50	30	10	70	50	30	10	50	30
0	109	109	109	109	107	107	107	107	101	101
1	98	93	89	84	95	91	86	83	86	83
2	89	80	73	67	86	78	72	66	74	69
3	81	70	62	56	78	68	61	55	65	59
4	74	62	53	47	71	60	52	46	57	51
5	67	54	45	39	65	53	45	38	50	43
6	61	48	39	33	59	47	39	33	45	38
7	56	43	35	29	54	42	34	28	40	33
8	52	39	30	25	50	38	30	24	36	29
9	48	35	27	21	46	34	25	21	32	25
10	44	31	24	19	43	31	23	18	30	23

### Ordering Guide

ECIT4-LED

Series

ECIT4-LED

Size

2 = 2FT  
4 = 4FT

Lumens

<u>2FT</u>	<u>4FT</u>
3166 (17W)	3220 (17W)
4350 (24W)	4480 (24W)
5470 (31W)	5705 (30W)
6452 (39W)	6910 (37W)
	9660 (51W)
	13440 (72W)
	17280 (96W)
	20730 (111W)
	25920 (144W)
	35391 (210W)

Color

3K  
35K  
4K  
5K

Options

EMBA { ^i \* ^ } & Æ ð æ ó  
 REFS = Silver Reflector  
 OCC-E = External Occupancy Sensor  
 OCC-I = Internal Occupancy Sensor  
 BILEVEL = Bi-level system  
 SS = Stainless Steel Latch  
 POLY = Polycarb lens  
 FR = Frosted lens over LED boards

\*\$!%j ``ck 'j c' hUj YXja a ]b[ 'ghUbxUX'dYf'  
 qI hi fY'

\*-<]] \ Yf 'UbX'W grca ``i a Yb'dUW\_Uj Yg'Uj Uj'UW'Yi dcb'  
 fYei Ygh'

## CERTIFICATIONS

Patented

UL  
NSF  
NEMA4X  
IP65  
IP66  
IP67  
RoHS  
PSI 1500  
SLP Guardian Seal

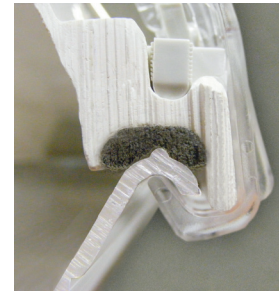


**UL Listing (FLR): File E319249**  
**UL Listing (LED): File E363909**  
**UL Recognized Components: File E215168**  
**Components Tested and Certified**  
**by NSF International**

### NEMA 4X



Offers 34% more contact between the lens and the gasket. Guardian Seal™ is a unique combination of our Injection Molded lens features and high performance “poured in place” gasket. This provides the most advanced sealing system available.



**HEAT**  
Testing

have been subjected to various testing to ensure a superior product. Even though the material will withstand a wide temperature range, it is incumbent on others to verify that the lamp/ballast/LED driver combination is appropriate for the ambient temperature of the application.