

EB-600

600W Grow Light

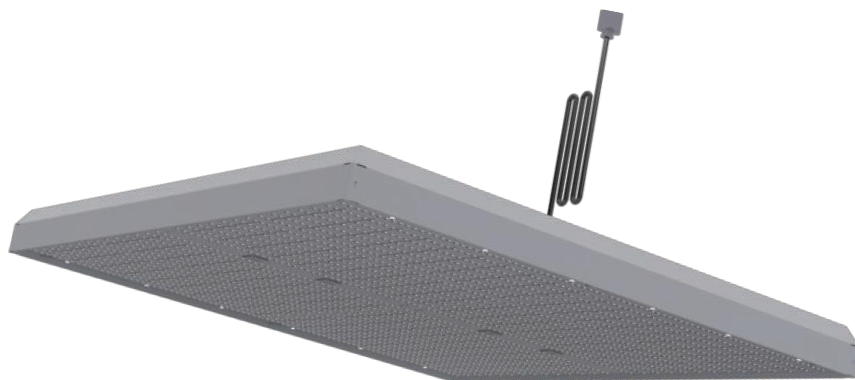
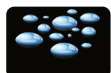
STANDARD

FEATURES

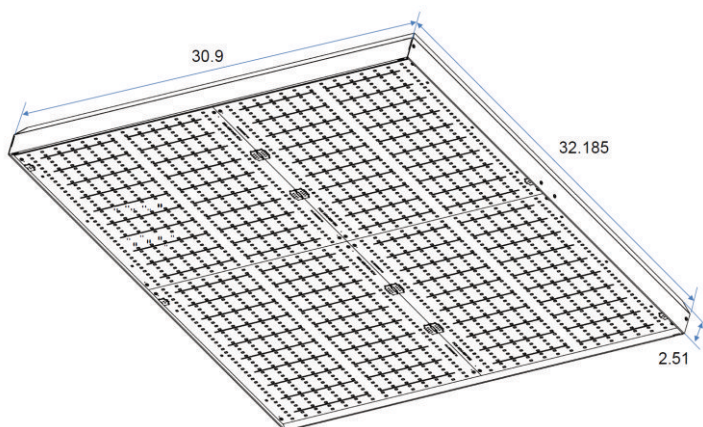
- Industry leading performance.
- High uniformity.
- Patented spectrum.
- Natural white light with ultraviolet.
- Controls compatible / spectrum tunable.
- Ideally suited for commercial grows.
- Powder coated aluminum housing.
- Made in the USA.
- Easy installation and operation.
- Ships with a 10' cord, NEMA 6-15P plug, and 5-15P adaptor.

WARRANTY & LISTINGS

- cULus listed for horticultural damp locations not exceeding a maximum ambient temperature of 40°C.
- DLC horticultural approved.
- 5-year warranty of all electronics and housing.



DIMENSIONS



ORDERING INFORMATION

Example: E141-600-B-ST-10U

Series	Wattage	Spectrum		Voltage		Options	
EB	600	BX	Bloom – no kicker	ST	120-277V	10U	10' cord & plug
		BU	Bloom – UV kicker	HV	180-528V		
		BR	Bloom – red kicker				
		UX	Universal – no kicker				
		UU	Universal – UV kicker				
		UR	Universal – red kicker				

SPECIFICATIONS

Light Source	LED
Spectra	Patented
Efficacy	2.3 $\mu\text{mol}/\text{J}$
PPF	1300 μmol
Input Power	600W MAX
Input Voltage / Current	120 @5A 240 @3A 277 @2A
L/W/H Weight	32 / 31 / 2.5 18lbs
Mounting Height	>12 Inches
Operating Temperature	-18°C - 43°C (0°F - 110°F)
Thermal Management	Passive

