

Certification Guide

Model	Length	Wattage	Operating Voltage	Total Lumens	Lumen per Watt	CRI	CCT	Ambient Temperature	Class I, Div. 2, Group A, B, C & D	Supply Wire Suitable Temp., °C	Hub Size
EMAR206L22U	2 ft	56W	120V - 277V 50/60 Hz	5476	98	85	4062	-20°C < Tamb < 55°C	T6	90°C	3/4 in. NPT
EMAR207L24U	4 ft	74W	120V - 277V 50/60 Hz	7660	103	82	4071	-20°C < Tamb < 55°C	T6	90°C	3/4 in. NPT

EMAR207L24U

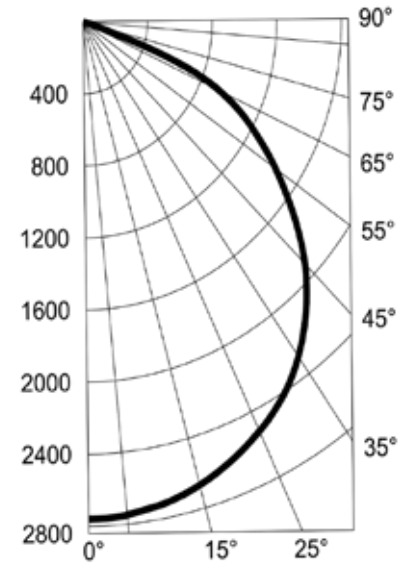
Coefficients of Utilization

% Effective Ceiling Cavity Reflectance rcc	80			50			10		
% Wall Reflectance rw	50	30	10	50	30	10	50	30	10
Room Cavity Ratio RCR	Effective Floor Cavity Reflectance 20%								
0	119	119	119	111	111	111	102	102	102
1	106	102	98	99	96	94	92	90	88
2	93	86	81	87	82	78	81	78	75
3	82	74	68	77	71	66	72	67	64
4	72	64	57	69	62	56	64	59	55
5	65	56	49	61	54	49	58	52	48
6	58	49	43	55	48	42	52	46	42
7	53	44	38	50	43	38	48	42	37
8	48	40	34	46	39	33	44	38	33
9	44	36	30	42	35	30	40	34	30
10	41	33	27	39	32	27	37	31	27

Candlepower Distribution

Deg.	Parl.	22.5	45	67.5	Norm
0	2760	2760	2760	2760	2760
5	2680	2666	2675	2676	2669
25	2513	2495	2516	2522	2519
35	2261	2248	2286	2295	2285
45	1925	1921	1960	1938	1321
55	1495	1516	1511	1459	1444
65	978	1004	953	941	928
75	409	399	344	17	15
85	34	5	5	4	4
90	0	0	0	0	0

Photometric Data



EMAR206L22U

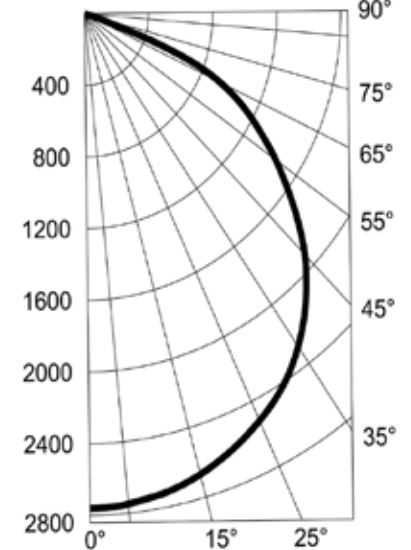
Coefficients of Utilization

% Effective Ceiling Cavity Reflectance rcc	80			50			10		
% Wall Reflectance rw	50	30	10	50	30	10	50	30	10
Room Cavity Ratio RCR	Effective Floor Cavity Reflectance 20%								
0	119	119	119	111	111	111	102	102	102
1	106	102	99	99	97	94	92	90	89
2	93	87	82	88	83	79	82	78	75
3	82	75	69	78	72	67	73	68	65
4	73	65	58	69	66	57	65	60	56
5	65	57	50	62	55	50	59	53	49
6	59	50	44	56	49	44	53	47	43
7	53	45	39	51	44	39	48	43	38
8	49	40	35	47	40	34	44	38	34
9	45	37	31	43	36	31	41	35	31
10	41	34	28	40	33	28	38	32	28

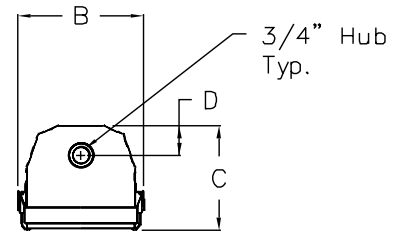
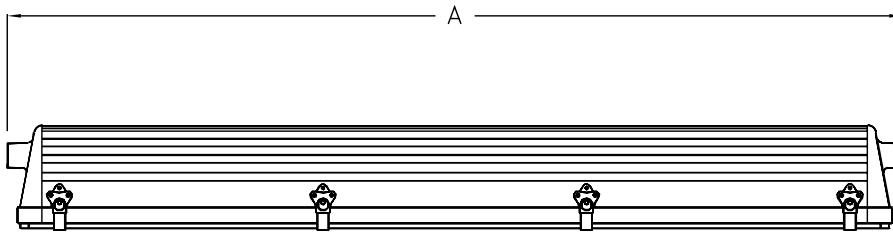
Candlepower Distribution

Deg.	Parl.	22.5	45	67.5	Norm
0	2068	2068	2068	2068	2068
15	1999	1996	1995	1998	2002
25	1962	1834	1867	1869	1876
35	1661	1666	1673	1669	1669
45	1396	1405	1407	1384	1379
55	1068	1087	1063	1052	1051
65	677	691	682	362	348
75	267	270	142	127	29
85	15	3	4	4	4
90	0	0	0	0	0

Photometric Data



Fixture Dimensions (inches)



EMAR 2 Series	Dimensions (inches)				Boxed Weight	Shipping Volume (Boxed Fixtures)
	A	B	C	D		
4 ft. Models	52.13	7.38	6.19	1.81	36 lbs.	2.0 cu. ft.
2 ft. Models	28.13	7.38	6.19	1.81	26 lbs.	1.0 cu. ft.

Accessories

Straight Mounting Kit

Catalog Number:
53033

Shipping Weight:
5 lbs.



Offset Mounting Kit

Catalog Number:
53032

Shipping Weight:
5 lbs.



Safety Cable

Catalog Number:
10128R

Shipping Weight:
1 lb



Straight Brackets

2 Required

Catalog Number:
26364

Shipping Weight:
2 lbs.



Offset Brackets

2 Required

Catalog Number:
26348

Shipping Weight:
2 lbs.

